



How The world began

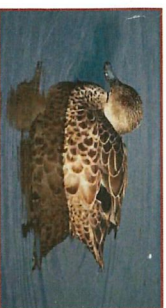
WAIMANGU.CO.NZ

Birds seen at Waimangu

NATIVE NEW ZEALAND BIRDS



New Zealand Swamp Hen / Pukeko



Grey Teal / Tētē
Crown Copyright: Department of Conservation
Te Papa Atawhai, photograph by C. S. Robertson



New Zealand Scaup / Pāpango
Crown Copyright: Department of Conservation
Te Papa Atawhai, photograph by Wynston Cooper



Australasian Bittern / Matuku
Crown Copyright: Department of Conservation
Te Papa Atawhai, photograph by Dick Veitch



Caspian Tern / Taranui
Crown Copyright: Department of Conservation
Te Papa Atawhai, photograph by Peter Morrison



New Zealand Dabchick / Wewia
Crown Copyright: Department of Conservation
Te Papa Atawhai, photograph by Geoff Moon



Black-billed Cull
Crown Copyright: Department of Conservation
Te Papa Atawhai, photograph by Rod Morris



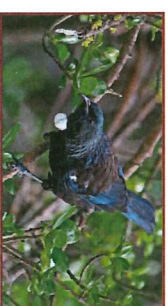
New Zealand Pigeon / Kereru



Bellbird / Korimako
Photograph by Betty Shepherd



Fantail / Piwakawaka
Photograph by Betty Shepherd



Tui
Photograph by Betty Shepherd



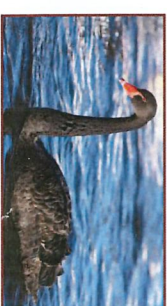
Little Black Shag



Black-backed Cull / Karoro



Welcome Swallow



Black Swan



Little Shag / Kawaupeka



Australasian Shoveler / Kuruwheangi



Banded Dotterel / Tuturwhatu



New Zealand Pipit / Pihohoi

INTRODUCED BIRDS



Mallard



Chaffinch



California Quail



Song Thrush